

Hillsborough All-County Band

2019 - 2020

7th/8th Grade Tuba Audition Requirements

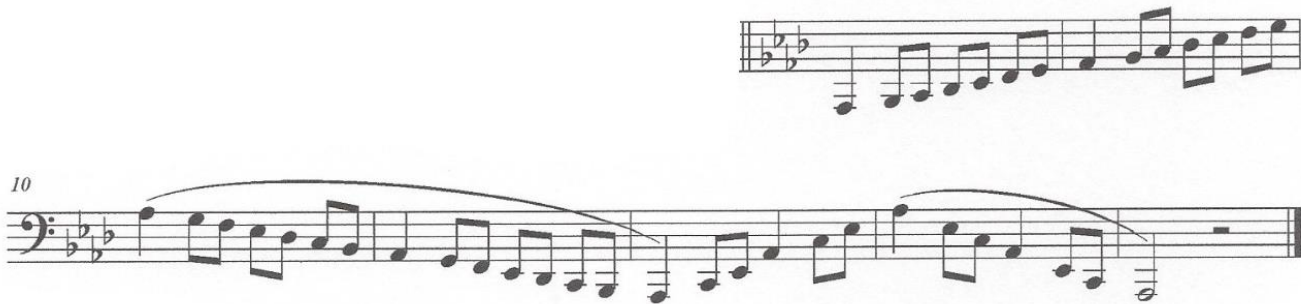
(Auditions will be held at King HS on **Wednesday, November 13th**)

- 1.) Scales should be performed complete with arpeggios, at a minimum tempo of MM *quarter note* = 120. Scales are to be performed a minimum of 2 octaves where possible. Additional points are possible for scales performed 3 octaves. Scales must be performed in complete octaves. The scales are to be tongued ascending and slurred descending.

Concert Eb Major Scale (Eb Major Scale)



Concert Ab Major Scale (Ab Major Scale)



The Chromatic Scale should be performed at a minimum tempo of MM *quarter note* = 120. The scale *will* be tongued ascending and slurred descending.

Hillsborough All-County Band

2019 - 2020

7th/8th Grade Tuba Audition Etude

The specific prepared exercises for their instrument(s) as listed below. Please note the suggested tempi that have been given.

Lyricaly (♩ = 96)

legato